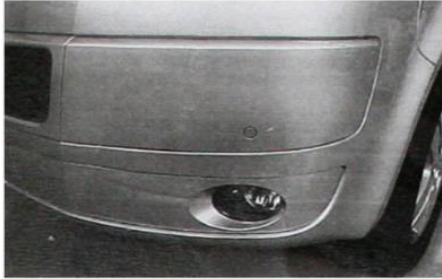


# SHORE VANS

C O R N W A L L

## VW T5.1 DRL FITTING GUIDE

**PLEASE NOTE:** PROFESSIONAL FITTING IS ESSENTIAL BUT IF YOU INSIST IN FITTING THESE DRL KITS YOURSELF, HERE ARE SOME STEPS/ADVICE IN ORDER TO HELP YOU FIT THEM CORRECTLY.

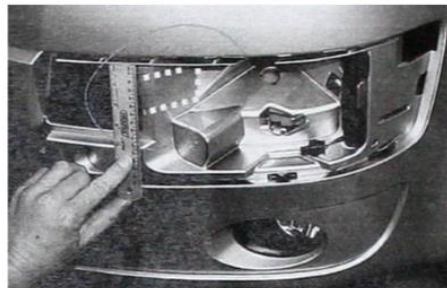


### STEP 1:

Remove the LH & RH panels in the bumper. The DRL mounting Panels will replace these parts.

Note: If front PDC is installed, it will be necessary to drill out the pre-marked holes in the new panels to 18mm.

The original PDC transducer mount can be removed and remounted using an appropriate self-adhesive tape. (Not supplied)

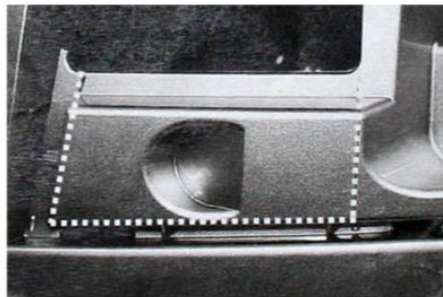


### STEP 2:

It is necessary to cut out two sections behind each of the bumper panels. For the outer panels measure down 15mm & 55mm from the inner edge as shown in photograph opposite.

Refer to photograph 4 for the overall cut out area of both inner and outer sections.

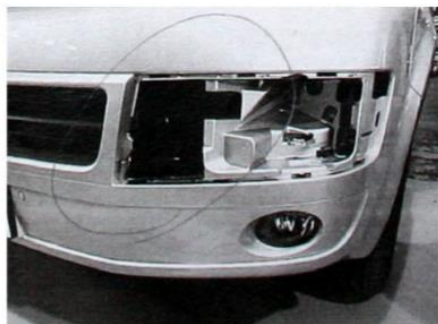
Note: These areas correspond with the rear of the DRL mouldings.



### STEP 3:

For the lower sections, cut out the area shown in the photograph opposite.

Refer to photograph 4 for the overall cut out area of both inner and outer sections.



### STEP 4:

Ensure the areas cut out correspond with the areas in the photograph opposite. Ensure to leave sufficient material for the clips on the DRL panels to secure onto the corresponding area of the bumper over.



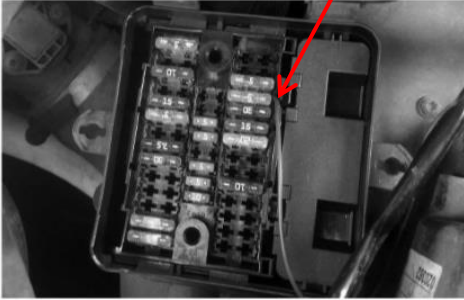
### STEP 5:

Feed the wiring from the both sides of the DRL Panels alongside your bumper towards the battery connector.

This will give power to the LED lights for both DRL panels.

**PLEASE NOTE:** You must use these LED lights to the wiring loom provided. Failure to comply will void your warranty.

4<sup>th</sup> fuse location from top



### STEP 6:

Now connect the blue wire from the LED function kit to the fuse box. Please Refer to image on the left.

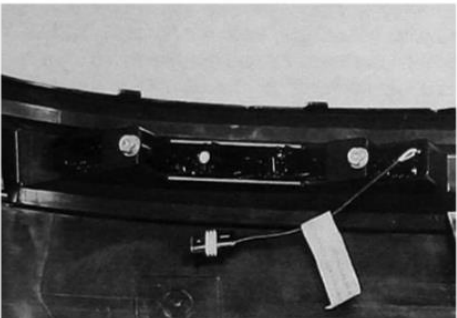
This ignition cable (blue cable) must be connected to 5amp fuse terminal shown exactly like the image.



### STEP 7:

Next step is to connect the white wire to the main light cable (yellow and black) which is found on your front headlight plug.

This connection towards the headlight plug is required in order for the DRLs to dim when the headlight function is turned on.



### STEP 8:

Assemble the DRL LED lights into the panels using the supplied screws in the kit.

Apply the chrome trim strips (optional) for the lower recess in the panels.

Connect the DRL assemblies to the harnesses installed in the previous step and then clip the panels into the bumper.



### STEP 9:

It is recommended for legislation to disable the existing DRL's on the vehicle, this is done by removing the two 5A fuses - SC12 & SC14.

On completion of installation, carry out a functional check and test to verify operation of the system.

1. DRL's should dim with headlights on.

2. DRL's should remain on for approximately 40 seconds after the ignition is switched off.